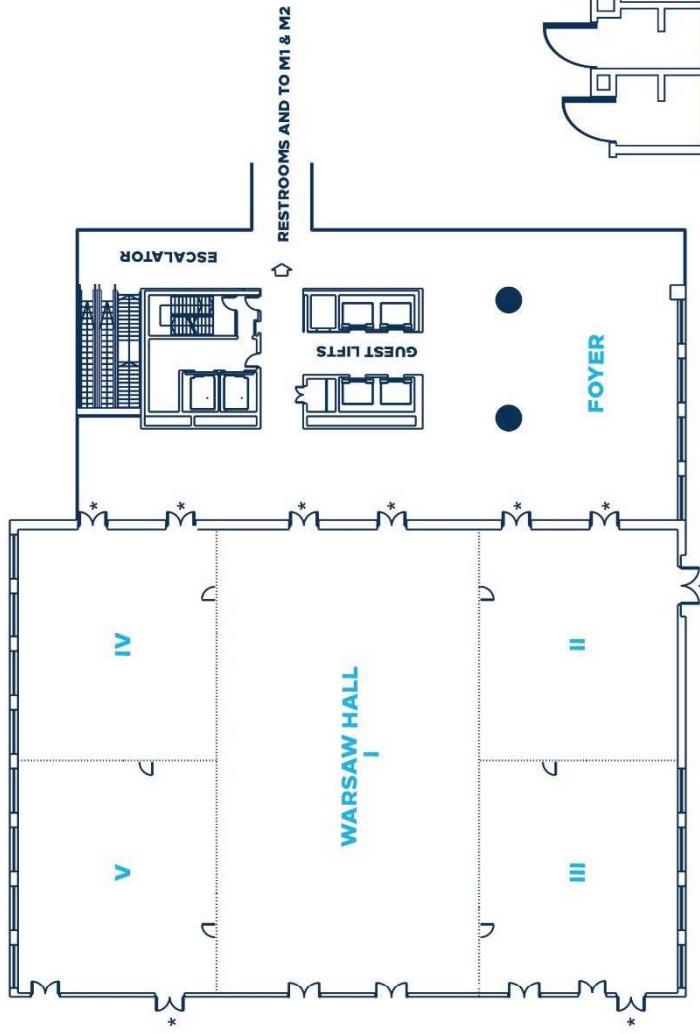
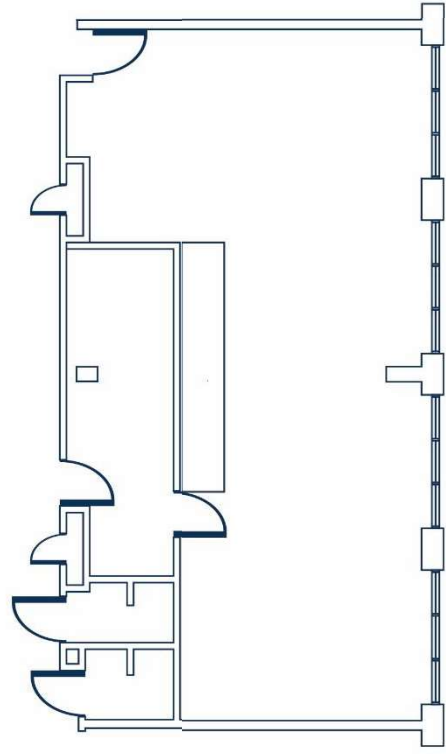


## CAPACITIES & DIMENSIONS

Floor	Ceiling Height (m)	Area Sq (m²)	Area sq ft	Dimensions LxW (m)	Dimensions LxW (ft)	Boardroom	Theatre	Classroom	U-shape	H-Square	Cabaret	Banquet (table of 10)	Banquet (table of 12)	Cocktail	Dinner Dance	Broadband Internet	Natural Daylight	Dimmer Function	Blackout	3 Phase
Warsaw Hall	WH 5	1,406	15,134	316 x 45	104 x 146	-	1,564	994	-	-	630	900	1,080	1,500	680	•	•	•	•	•
Sector I+II+III or I+IV+V	WH 5	992	10,680	316 x 31.4	104 x 103	-	1,000	660	-	-	392	560	672	1,050	460	•	•	•	•	•
Sector I	WH 5	565	6,082	316 x 17.9	104 x 58.7	-	580	350	88	-	180	300	360	575	250	•	-	•	•	•
Sector II+III or IV+V	WH 5	427	4,596	316 x 13.5	104 x 44.3	-	430	300	82	-	160	240	288	450	150	•	•	•	•	•
Sector II or III or IV or V	WH 5	213	2,293	15.8 x 13.5	51.8 x 44.3	50	200	120	40	-	70	100	120	220	80	•	•	•	•	•
Foyer	WH -	520	5,597	20x20 + 6x20	19.7x65.6 + 65.6x65.6	-	-	-	-	-	-	-	-	550	-	•	•	•	-	•
Boardroom	M1 3	29.7	319.7	7.4 x 4.1	24.3 x 13.5	12	-	-	-	-	-	-	-	-	-	•	•	•	•	-
Meeting Room 1	M1 3	54.8	589.9	7.4 x 7.4	24.3 x 24.3	14	40	26	18	24	21	30	36	40	-	•	•	•	•	-
Meeting Room 2	M1 3	86.9	935.4	7.5 x 11.9	24.6 x 30	22	65	42	23	28	28	50	60	50	-	•	•	•	•	-
Meeting Room 3	M2 3	30.1	324	8.0 x 3.9	26.2 x 12.8	14	22	16	-	-	-	-	-	-	-	•	•	•	•	-
Meeting Room 4	M2 3	29.5	317.5	8.0 x 4.0	26.2 x 13.1	14	22	16	-	-	-	-	-	-	-	•	•	•	•	-
Meeting Room 5	M2 3	29.8	328.8	8.0 x 3.9	26.2 x 12.8	14	22	16	-	-	-	-	-	-	-	•	•	•	•	-
Meeting Room 6	M2 3	27.7	239.2	7.4 x 3.9	24.3 x 12.8	14	22	16	-	-	-	-	-	-	-	•	•	•	•	-
Meeting Room 7	M2 3	36.9	397.2	9.3 x 4.1	24.3 x 13.5	14	22	16	-	-	-	-	-	-	-	•	•	•	•	-
Meeting Room 8	M2 3	29.7	319.7	8.0 x 3.7	26.6 x 12.1	14	22	16	-	-	-	-	-	-	-	•	•	•	•	-
Meeting Room 9	M1 3	57.8	642.6	10.7 x 5.3	35.9 x 17.9	22	42	27	27	30	21	30	36	40	-	•	•	•	•	-
Meeting Room 4+6 or 6+8	M2 3	58.4	628.6	8.0 x 8.0	26.2 x 26.2	16	36	27	16	22	14	20	24	30	-	•	•	•	•	-
Meeting Room 4+6+8	M2 3	87.5	941.8	8.0 x 11.6	26.2 x 38	26	65	40	29	34	28	50	60	50	40	•	•	•	•	-
Light Room	M2 3	138.8	1,494	8.2 x 18.3	26.9 x 60	46	110	80	47	53	70	80	96	110	80	•	•	•	•	-
Panorama	26 3	86.4	927	15.7 x 5.5	51.5 x 18	30	50	30	-	-	-	40	-	50	-	•	•	•	•	-



LEVEL WH



**PANORAMA**  
26<sup>th</sup> FLOOR, MEETING ROOM WITH THE VIEW

